

# NFC Scanner

## User guide for the passive antenna

We offer an industry-proven solution consisting of an intuitive software suite and standardized plug-and-play hardware interfaces to optimize, simplify and speed up the manufacturing, installation and maintenance of indoor and outdoor LED luminaires.

Hardware interfaces for smartphones with NFC antenna can be used to program NFC LED drivers. In case your smartphone has a low-quality NFC antenna or does not have an NFC antenna at all, you can also use the optional passive antenna and NFC Scanner. Via Bluetooth®, these devices can be easily connected to the smartphone and then provide a reliable and stable NFC connection. Bluetooth® also offers a more comfortable way of programming LED drivers which are already built into a luminaire.

### Areas of application

- Wireless programming of LED drivers using the T4T Field software

### Tuner4TRONIC Field app features

- Wireless and mains-voltage-free programming of OSRAM outdoor NFC LED drivers
- Adjustment of luminaire light output and dimming levels
- Copy-and-paste function to transfer luminaire settings from defective to replacement LED drivers
- Support of our new-generation OT 1DIM and 4DIM outdoor LED NFC drivers

### Product family features

- Small and robust NFC antenna extension
- Uses Bluetooth® to provide NFC functionality to smartphones without NFC antenna
- Includes passive antenna for increased signal strength

### Step-by-step instructions

Provided equipment



### Equipment and accessories

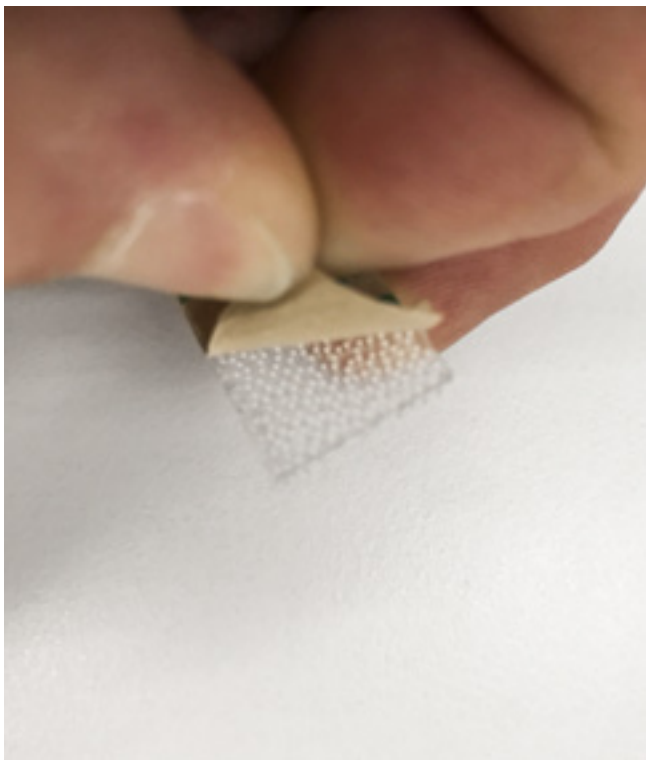
- USB cable (Micro USB type B)
- NFC Scanner
- Passive antenna
- Velcro fasteners

Passive antenna



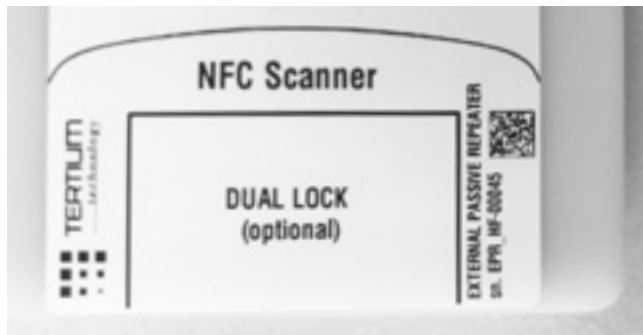
**Step 1:**

Remove the protective film from the adhesive surface of the Velcro fasteners



**Step 2:**

Stick one of the provided Velcro fasteners on the marked DUAL LOCK area of the passive antenna



**Step 3:**

Stick the other one of the provided Velcro fasteners on the NFC Scanner



**Step 4:**

Use the Velcro fasteners to attach the NFC Scanner to the passive antenna



**Step 5:**

Open the Bluetooth® function on your mobile phone and start the T4T Field app



**Step 6:**

T4T Field app programming can be started



Use our contact form

[www.inventronics-light.com/contact-us](http://www.inventronics-light.com/contact-us)



Service contact:

**Inventronics GmbH**

Parkring 31-33, 85748 Garching, Germany

[www.inventronics-light.com](http://www.inventronics-light.com)

[support@inventronicsglobal.com](mailto:support@inventronicsglobal.com)

INVENTRONICS is a licensee of ams  
OSRAM. OSRAM is a trademark of ams  
OSRAM.

**inventronics**