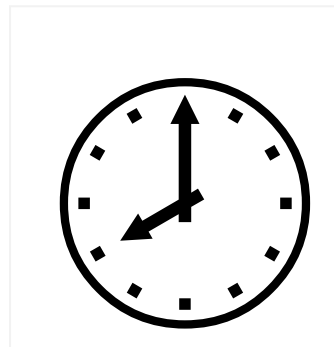
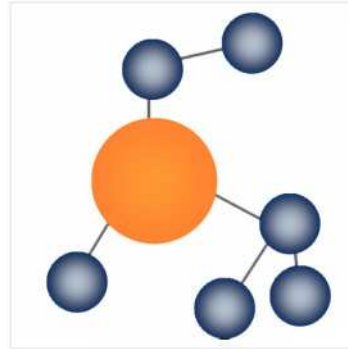


# DALI Professional Controller-4



Software Manual

## Real Time Clock

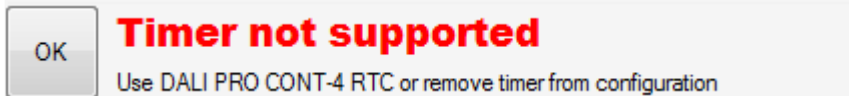


## DALI PROFESSIONAL CONT-4 RTC Timer

### Supported Hardware

The timer functionality will only be supported with following hardware:  
DALI PROFESSIONAL CONT-4 RTC ( EAN10: 4008321 710871)

If the previous DALI PROFESSIONAL Hardware (EAN10: 4008321 478948) is used, a error message will be displayed when uploading a configuration containing timers.



Configurations without timers still can be uploaded to the controller.

### Scheduler values

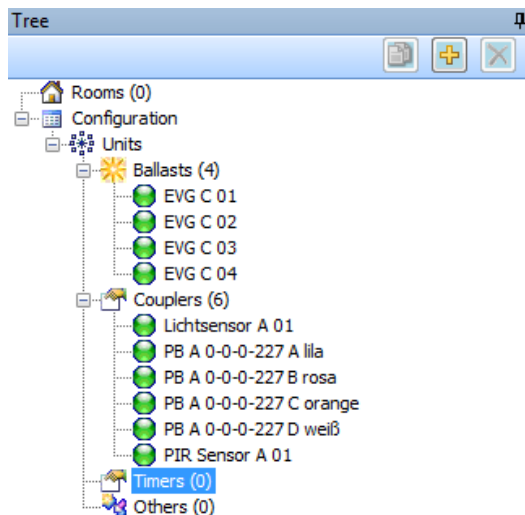
Possible scheduler values are

- Single Weekdays ( Mo,Tu,We,Th,Fr,Sa,Su )
- Daytime in hour / minute resolution.
- National holidays are not supported

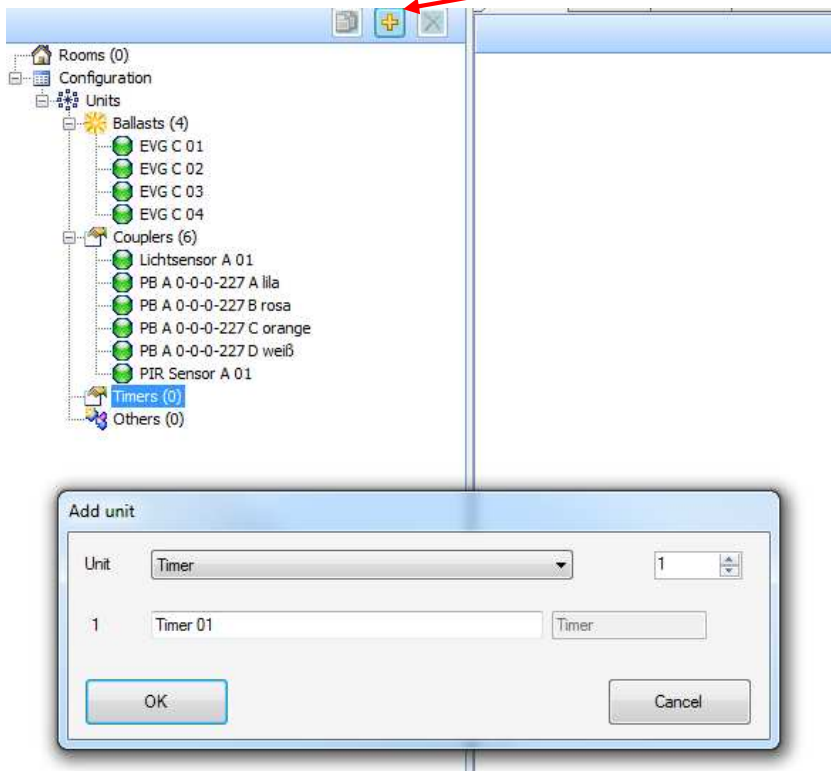
The default value is Mo,Tu,We,Th,Fr at 08:00.

### Configuring the timer values

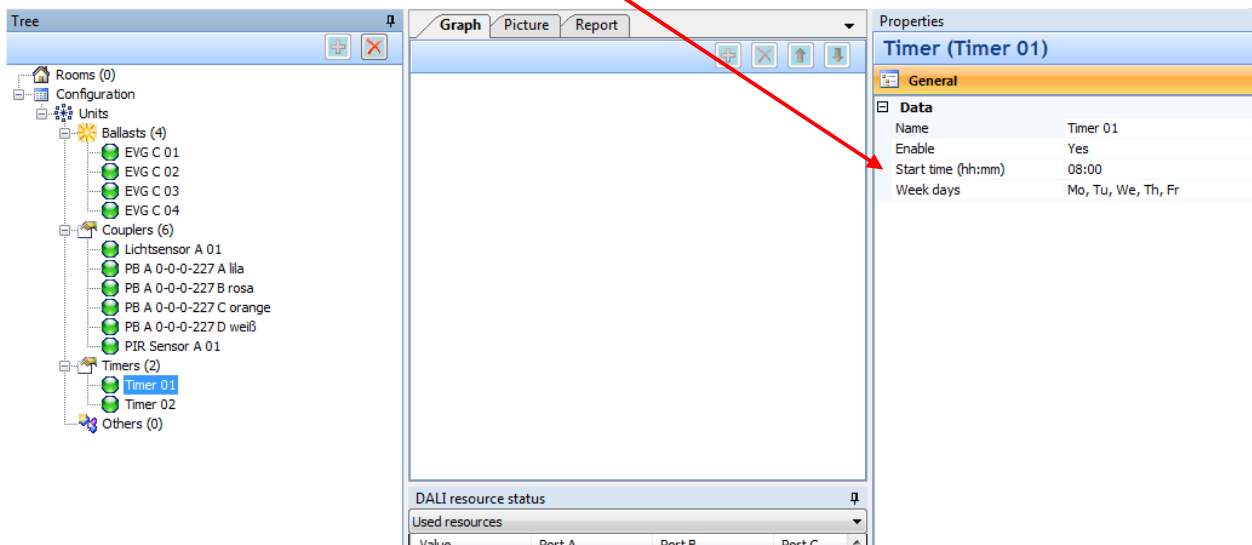
The timers will be displayed in the tree under Units



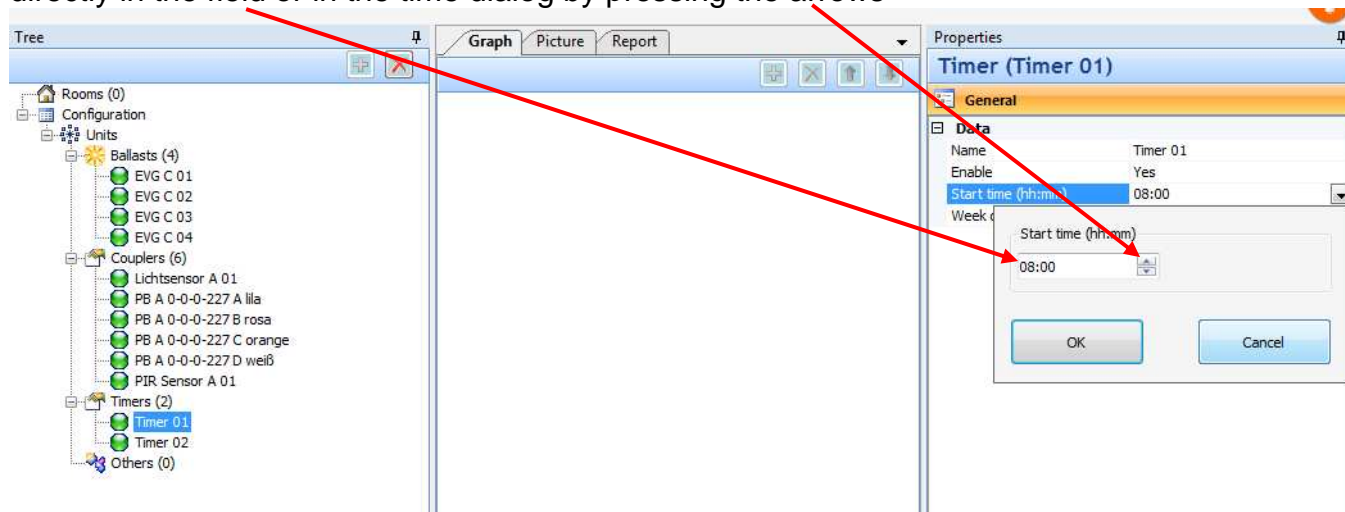
A new timer can be created by pressing the “+” icon and the add unit dialog.



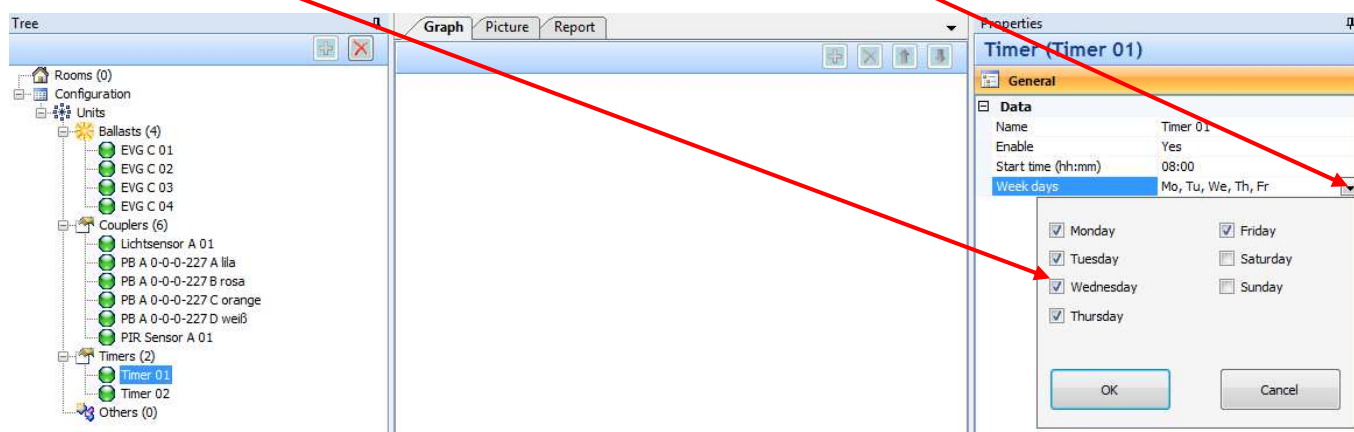
The **starting time** of the timer can be configured by selecting the timer and editing the values in the Properties / General dialog



The values for the **starting time** can be edited directly in the field or in the time dialog by pressing the arrows



The values for the **weekdays** can be edited directly in the field or in the weekday dialog by pressing the arrow

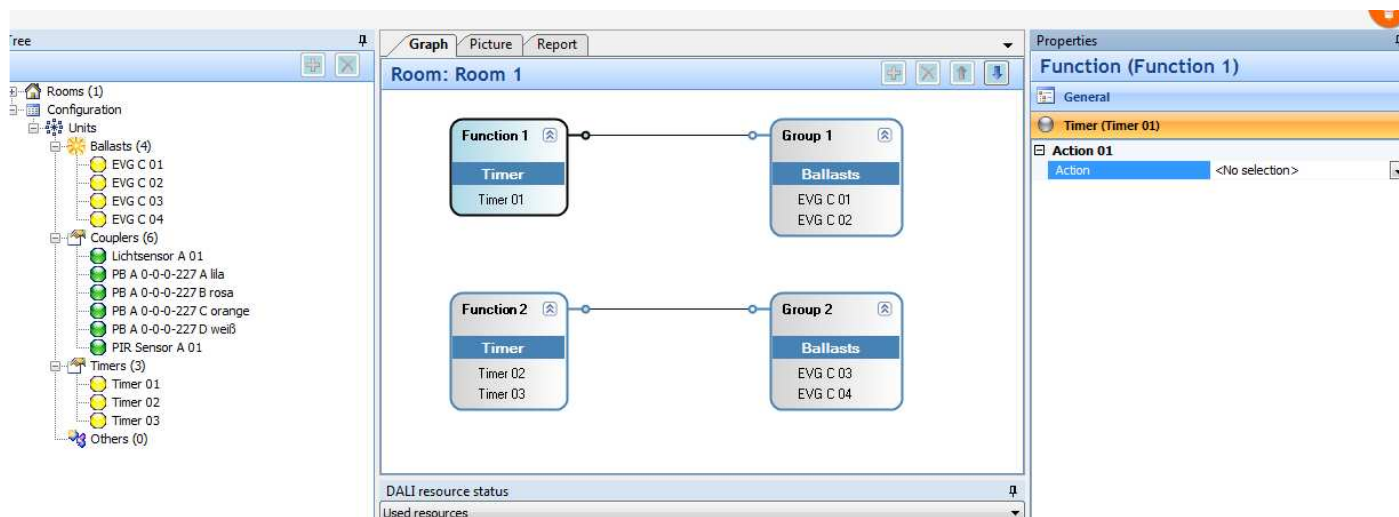


## Using the timer

To use a timer it has to be added to a function (like a pushbutton or PIR..).

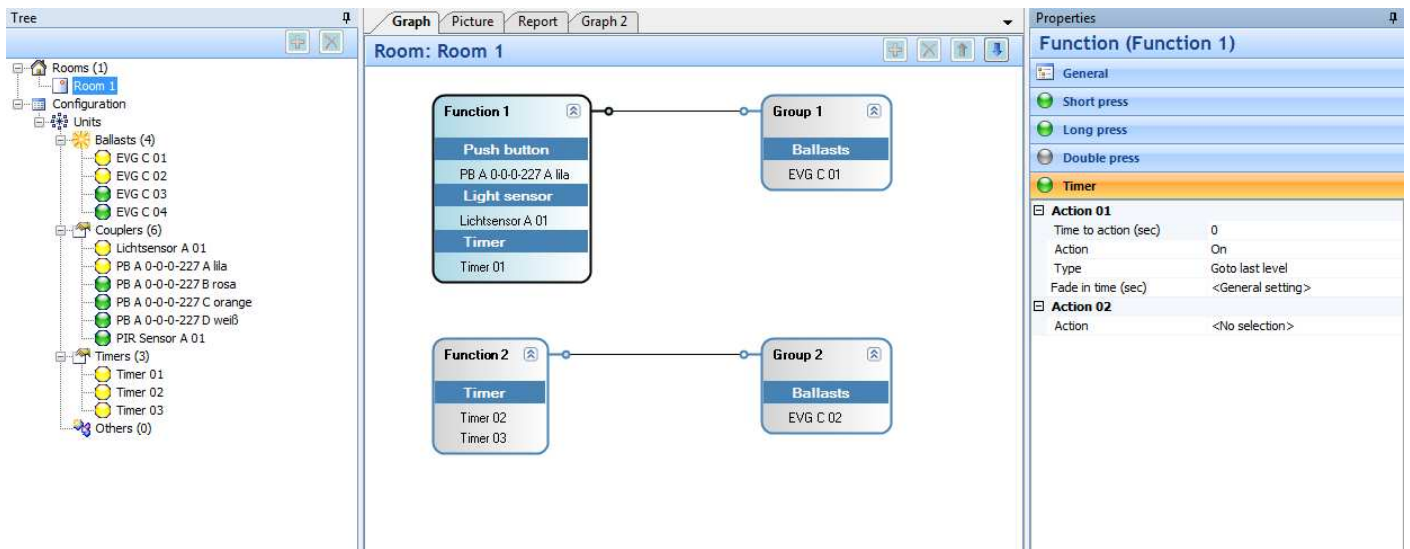
The same timer can only be used once together with the same ballast group, if not an error will be displayed.

For timers 'no action' is default action value.

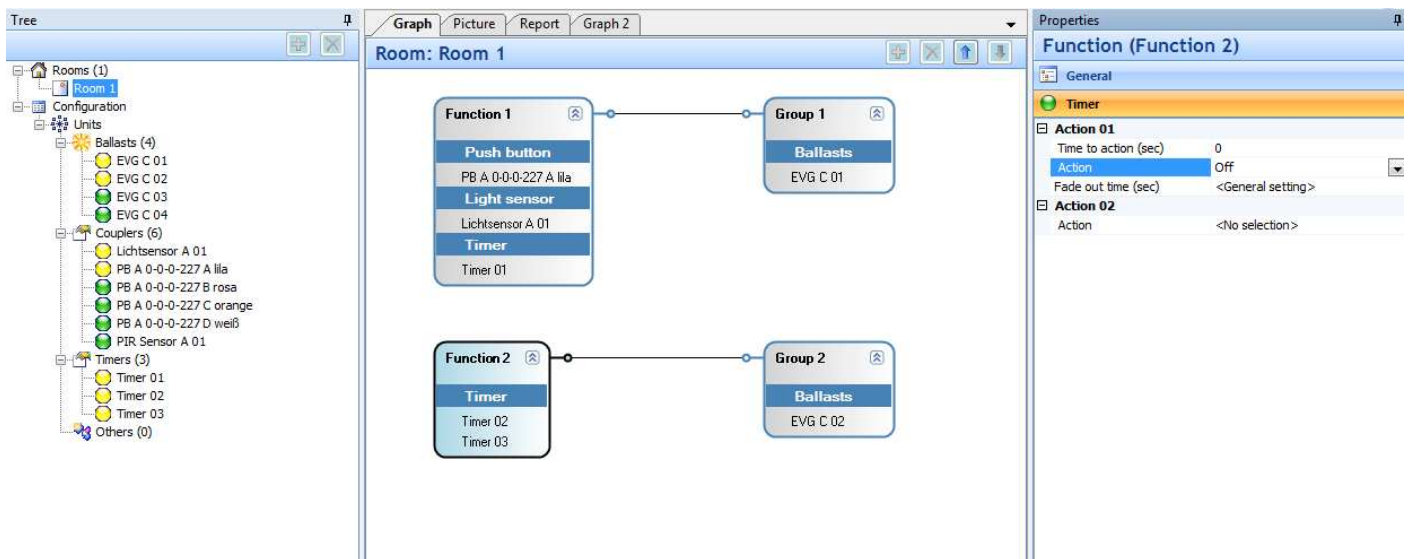


Timers support following actions:

- On
- Off
- Relay
- PIR Enable /Disable
- Action loops



More than one timer can be added to a function. Then the same action will be executed at different moments.

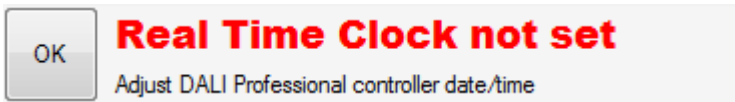


Multiple usage of the same timer in different ballast groups are possible. Overlapping groups are also accepted.

### Setting the DALI PROFESSIONAL Real Time Clock

Before using the timer the Real Time Clock on the DALI PRO CONT-4 RTC controller has to be adjusted.

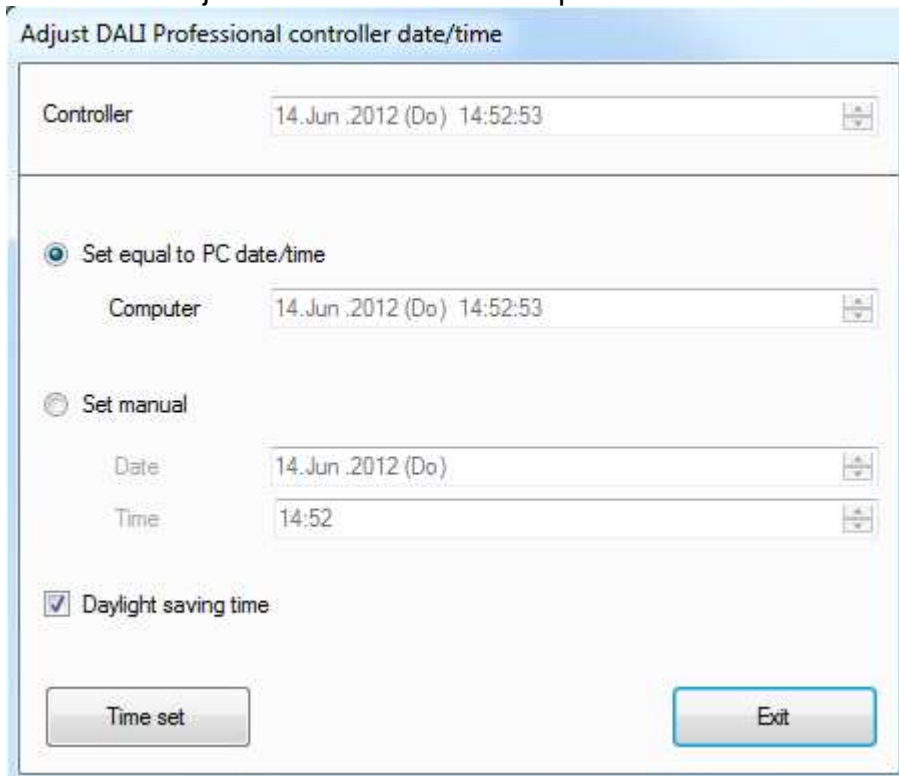
On a new produced controller the time is not set. When uploading the first time a configuration to the controller a dialog will be displayed to set the time on the controller (Same dialog than for manual adjustment). If the time is not set by the user an error will be shown and the upload is not possible.



When PC / software is connected and these controller supports the timer functionality a clock symbol will be shown active on the toolbar.



To manually adjust the Real Time Clock press the clock button and a dialog will appear.



In this dialog it is possible to synchronize the Real Time Clock with the PC time or to set a individual time.

Valid are only dates beginning from 1. January 2012.

In the top of the dialog the current Controller date/time is displayed.

### Daylight Saving Time

Enable / disable daylight saving time is possible with a check box.

When the time is changing from 2am to 3am (last Sunday in March) all events that are configured between 2am and 3am will not be executed.

When the time is set from 3am to 2am (last Sunday in October), all events between 2am and 3am will be executed a second time.

### Missed timer events

When timer events have been missed (controller switched off or power failure), these events will not be executed.